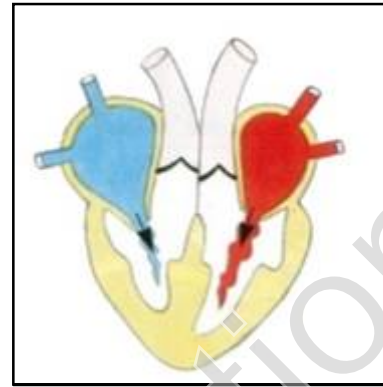
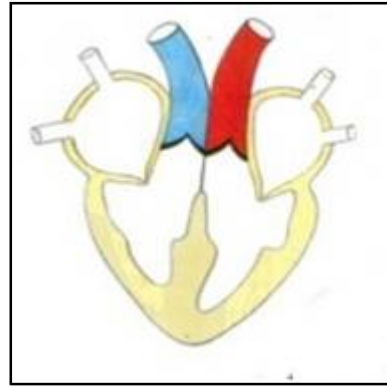
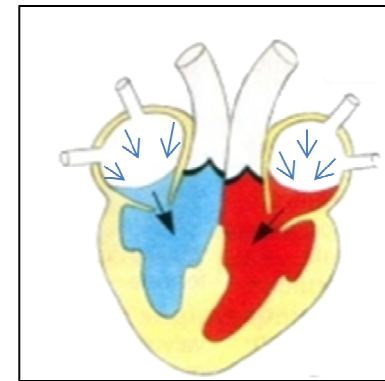
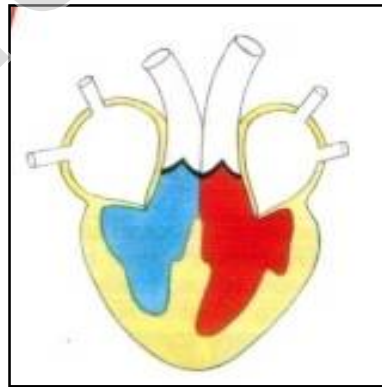
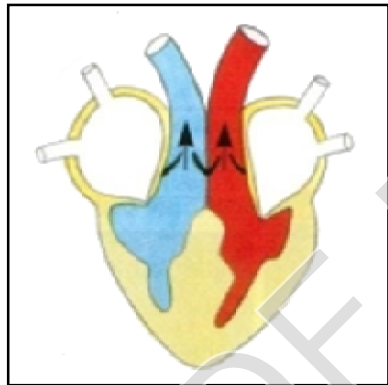


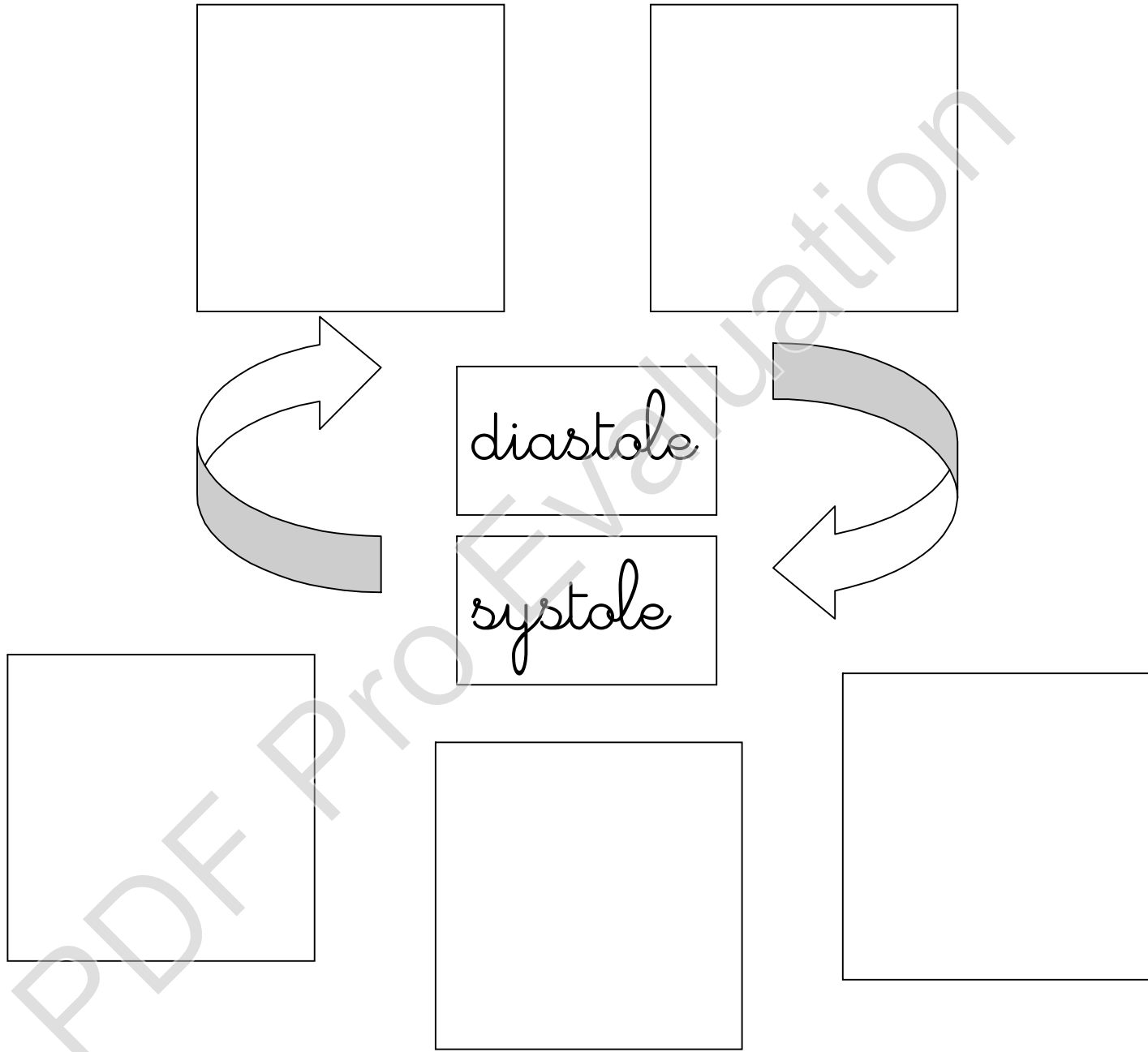
<p>La diastole est le cœur au repos.</p>	<p>La systole est le cœur qui travaille; qui contracte. Pour plus de clarté, il est décomposé en 3 phases</p>
<p>Elle débute par la fermeture des valves aortiques et sigmoïdes.</p>	<p>La première phase débute par la contraction de l'oreillette (contraction auriculaire) pour vider totalement cette dernière</p>
<p>Sous la pression par les oreillettes pleines de sang, les valves mitrales et tricuspides s'ouvrent. C'est le remplissage des ventricules</p>	<p>La phase deux; toutes les valves sont fermées.</p>
	<p>La dernière phase débute par la contraction ventriculaire qui sous la pression ouvre les valves sigmoïdes et aortiques. Le sang est éjecté dans les artères pulmonaires et aortiques. Et, le cycle recommence...diastole-systole</p>

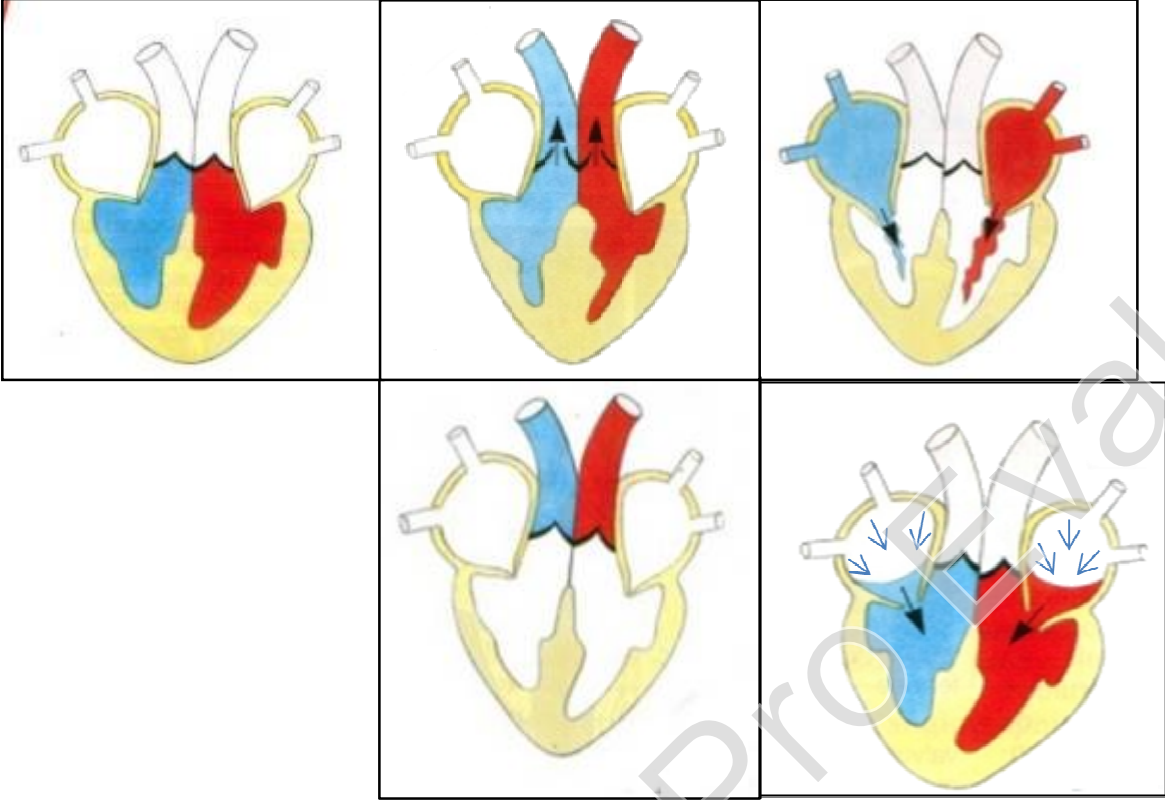


diastole

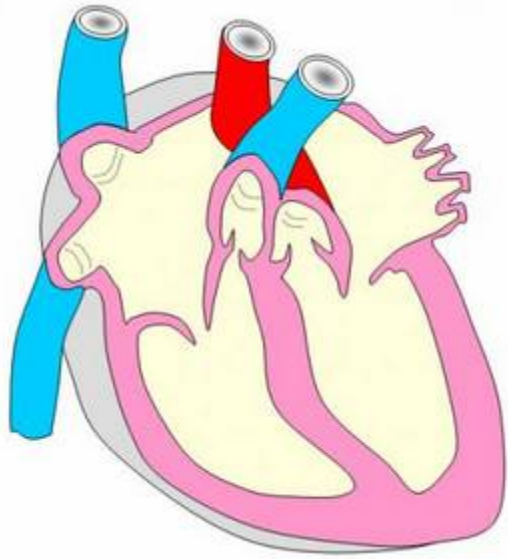
systole



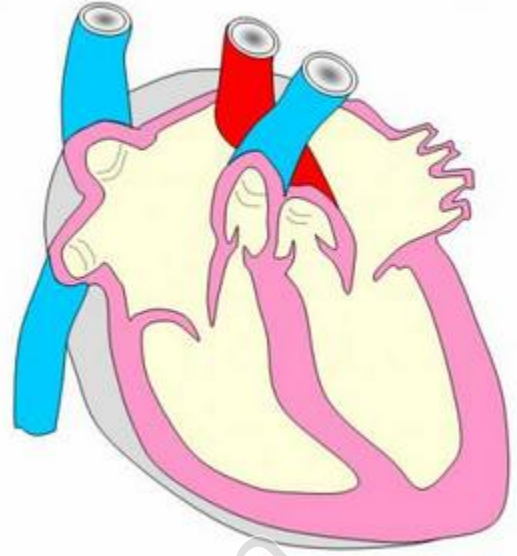




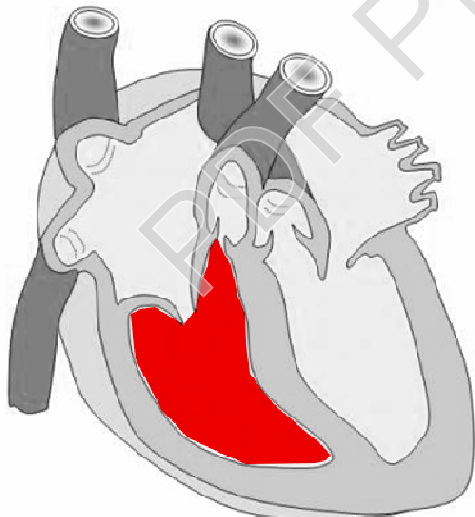
PDF PRO Evaluation



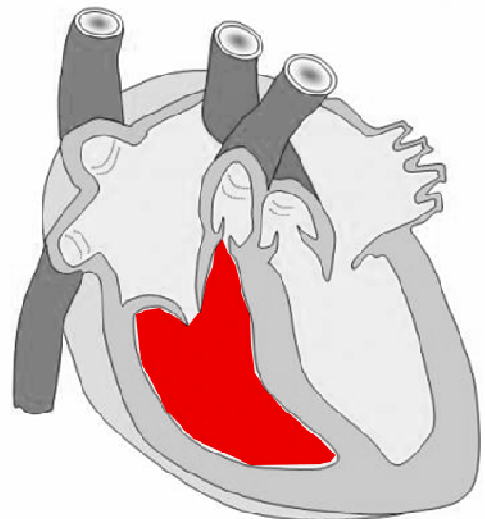
coeur



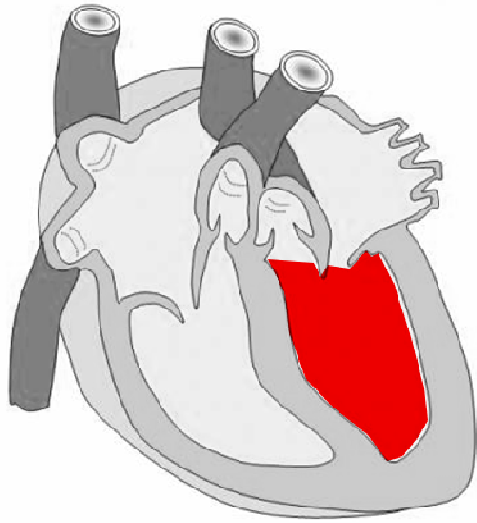
coeur



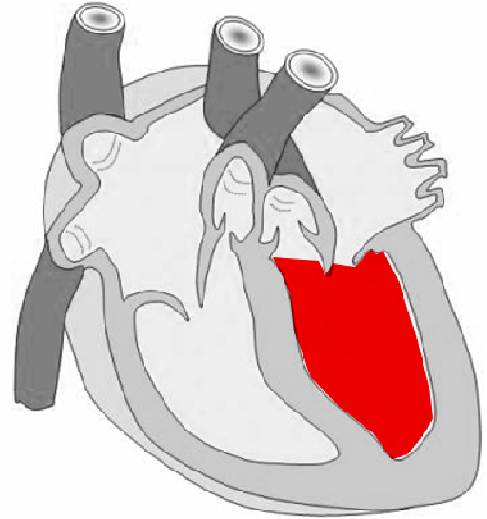
ventricule droit



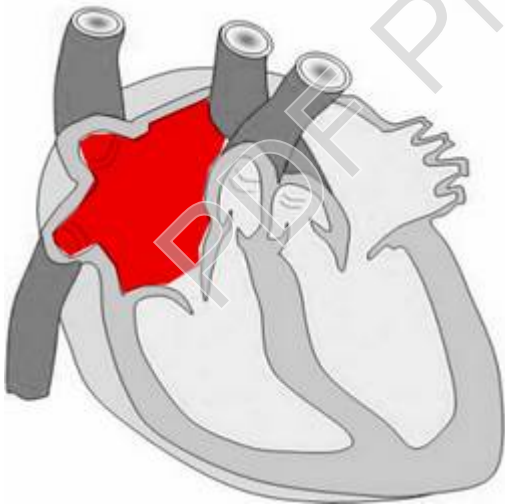
ventricule droit



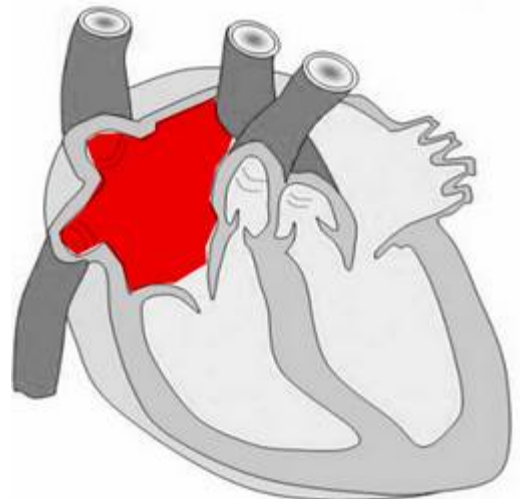
ventricule gauche



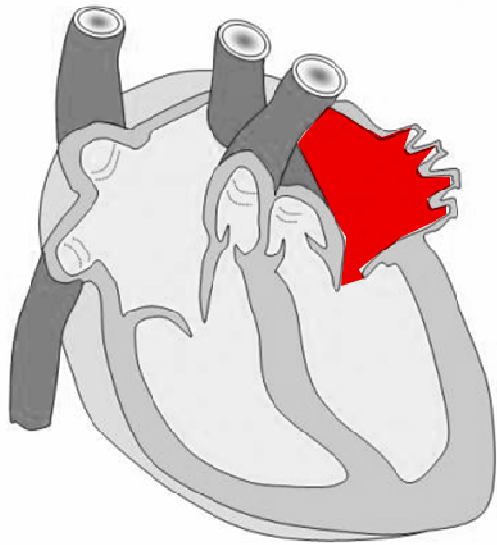
ventricule gauche



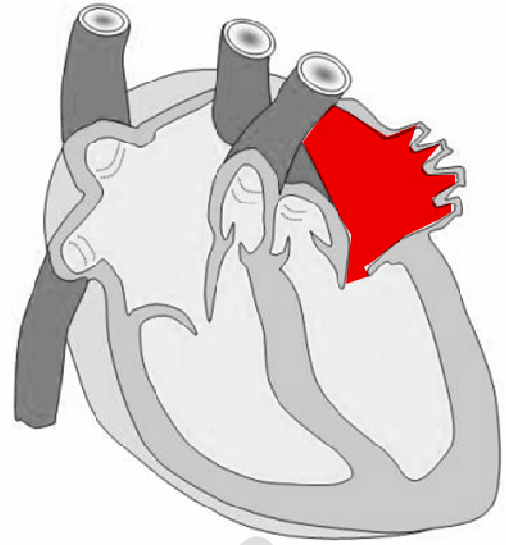
oreillette droite



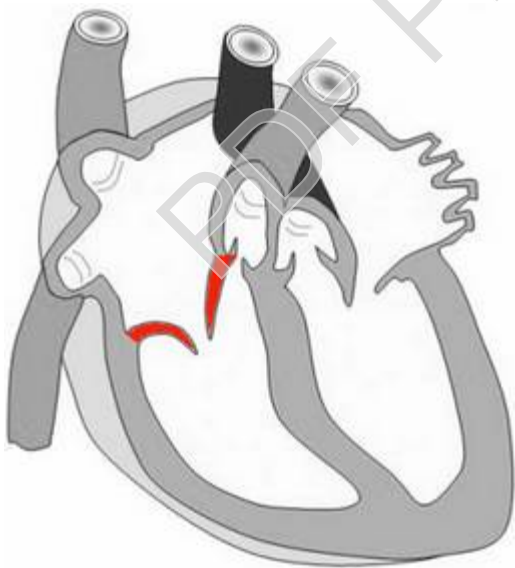
oreillette droite



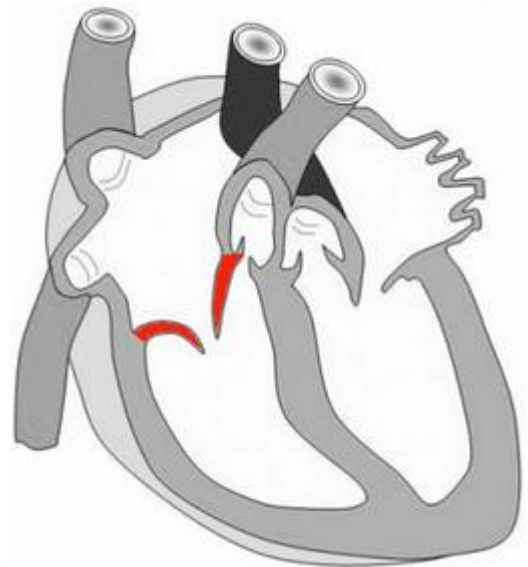
oreillette gauche



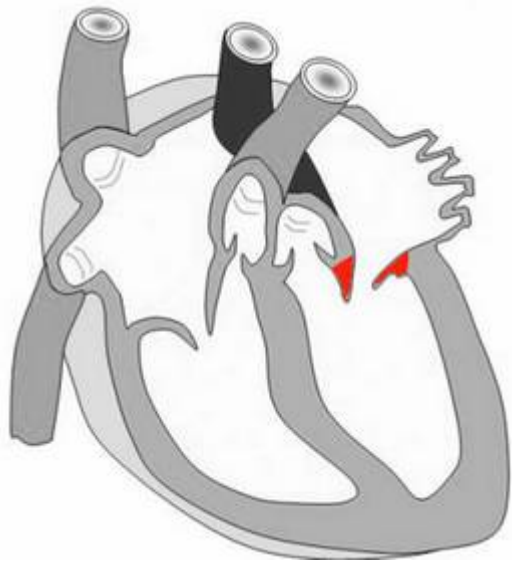
oreillette gauche



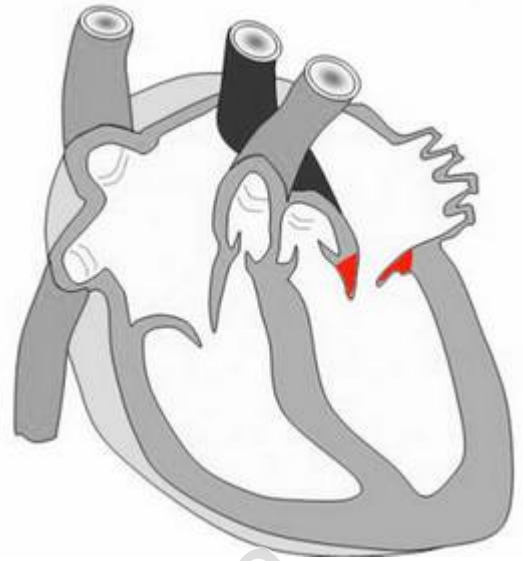
valvule tricuspide



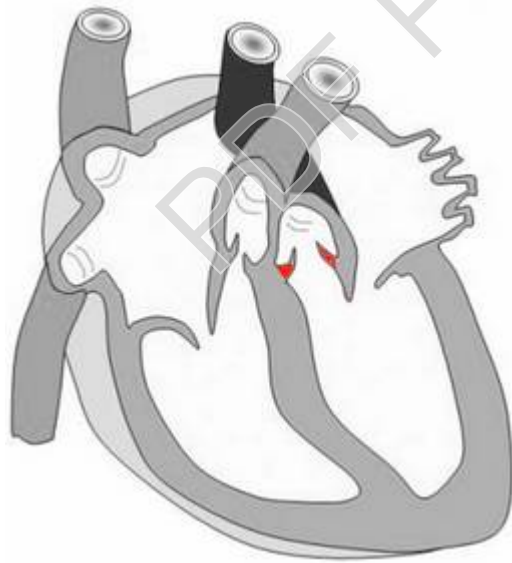
valvule tricuspide



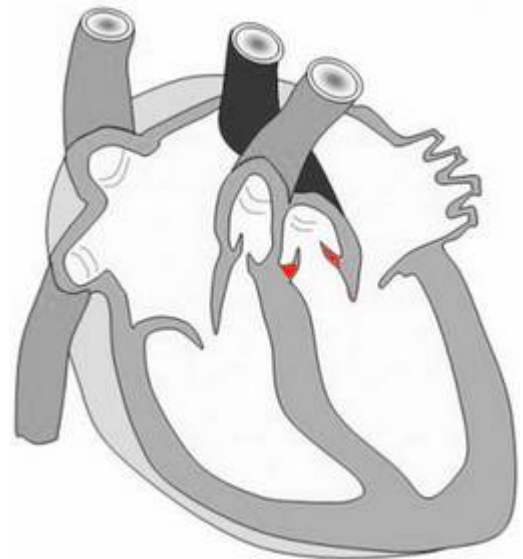
valvule mitrale



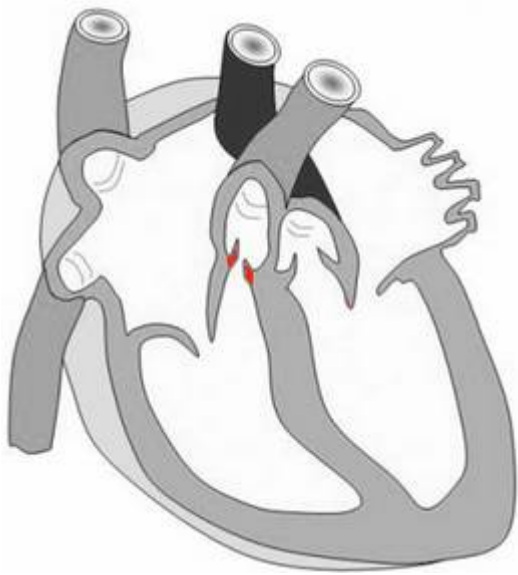
valvule mitrale



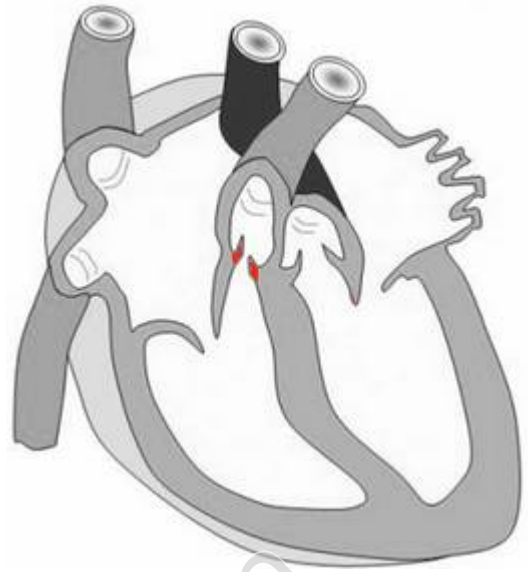
valvule aortique



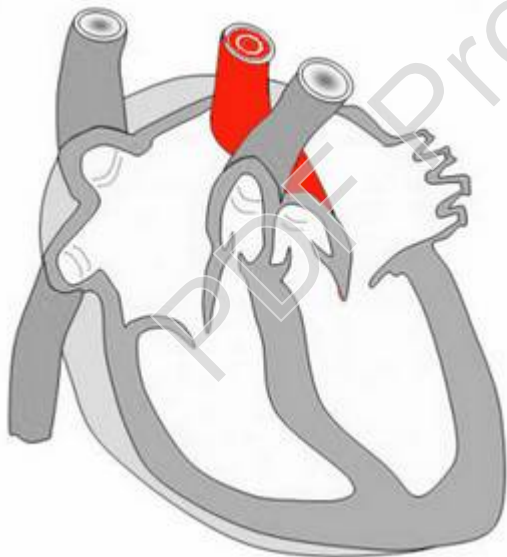
valvule aortique



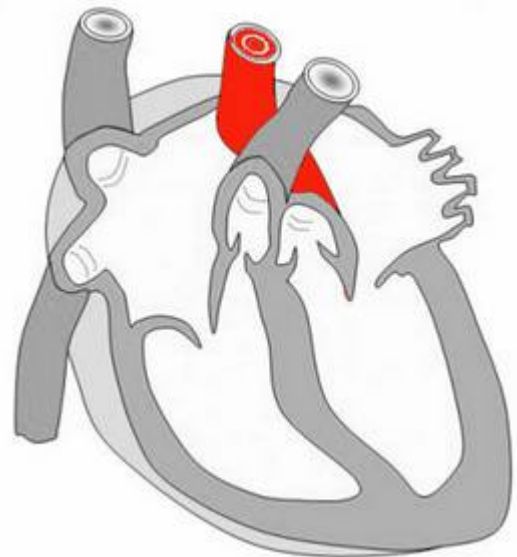
valvule sigmoïde



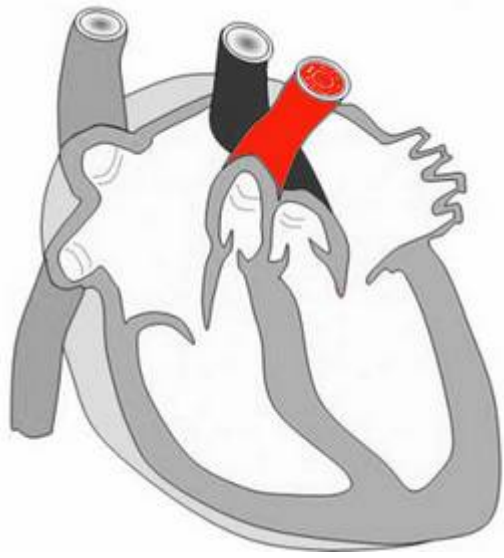
valvule sigmoïde



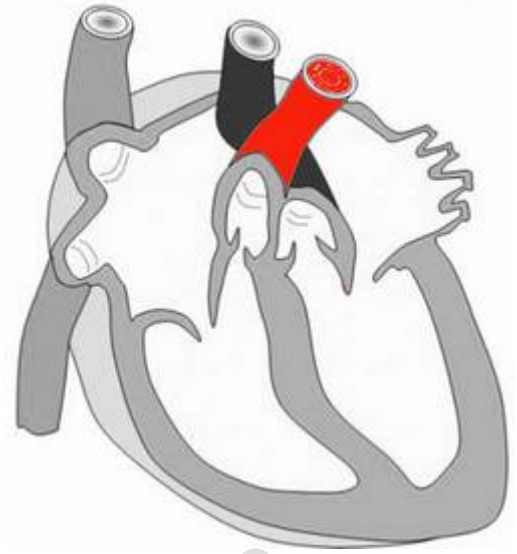
aorte



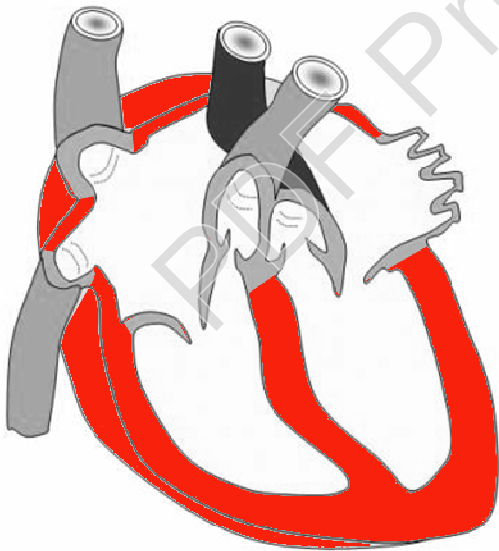
aorte



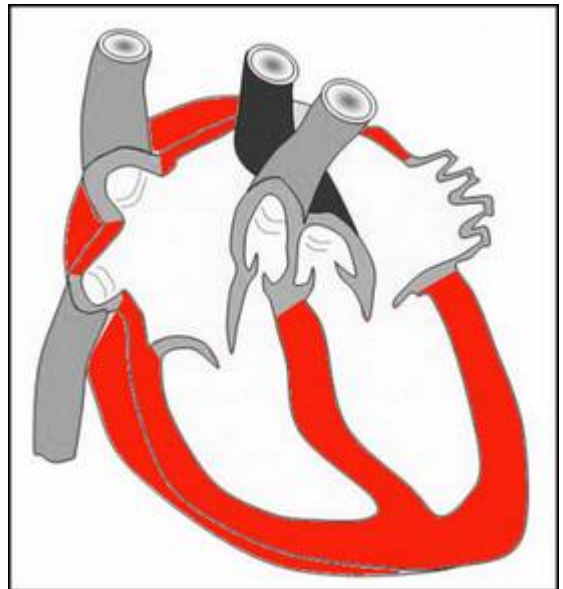
artère pulmonaire



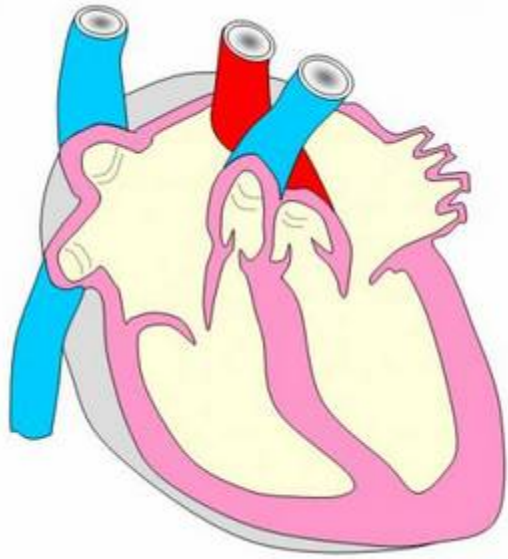
artère pulmonaire



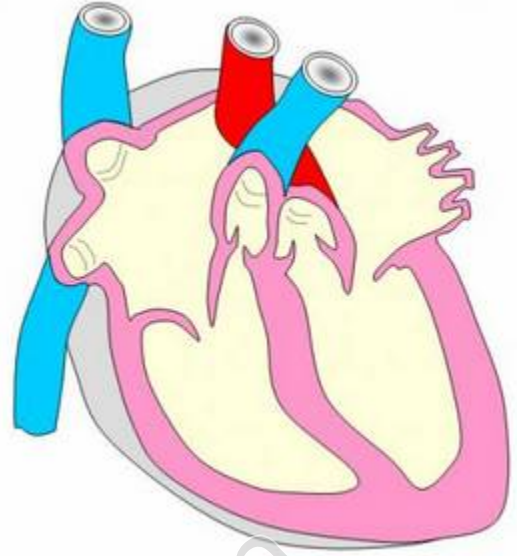
muscle cardiaque



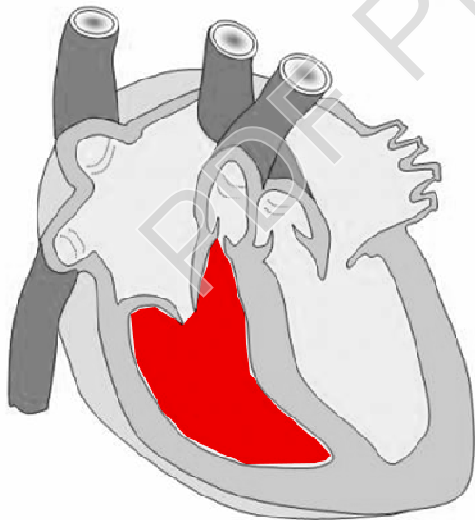
muscle cardiaque



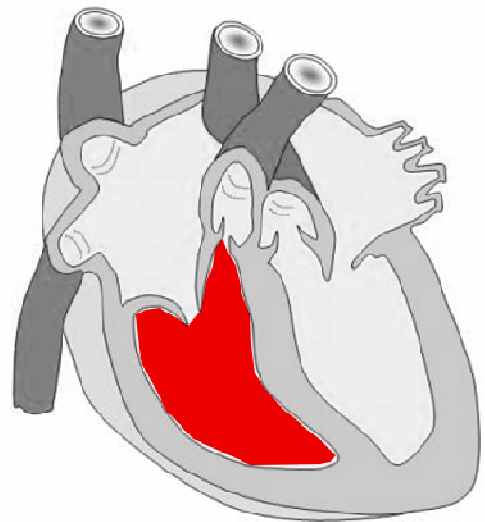
coeur



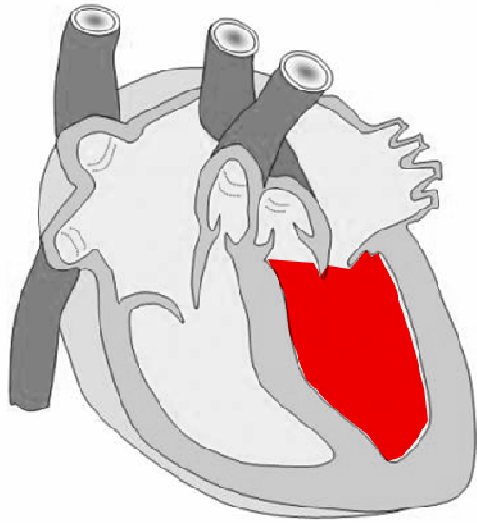
coeur



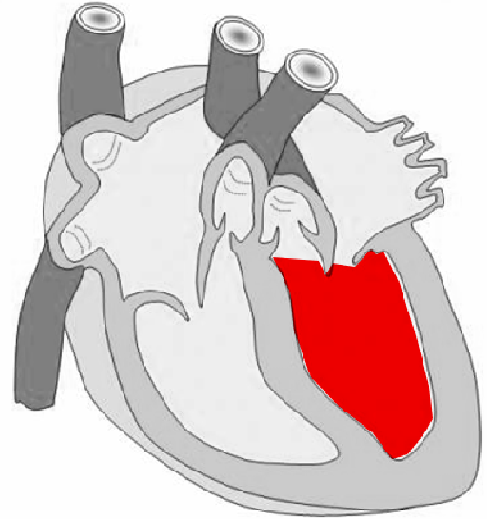
ventricule droit



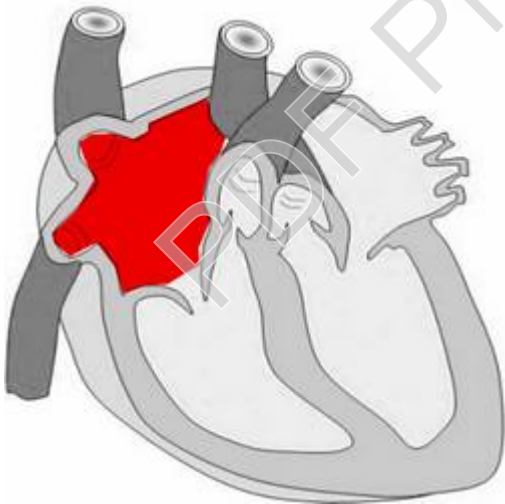
ventricule droit



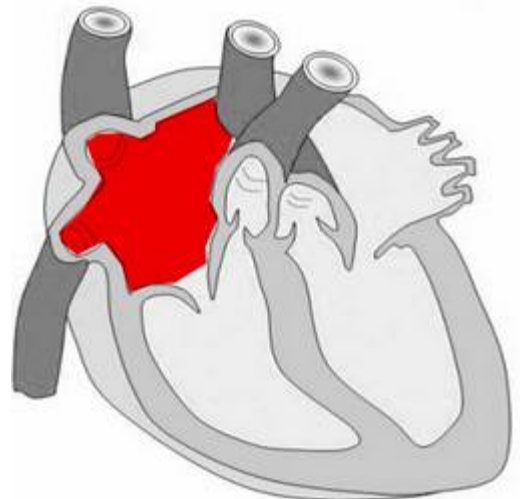
ventricule gauche



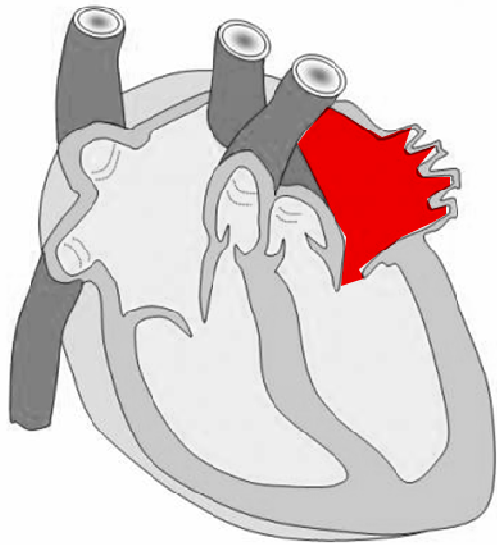
ventricule gauche



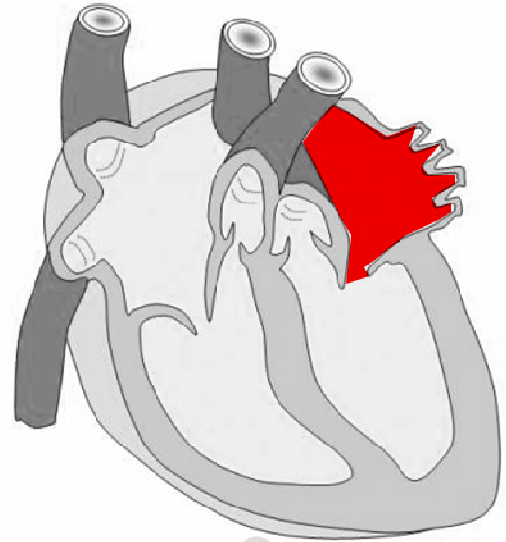
oreillette droite



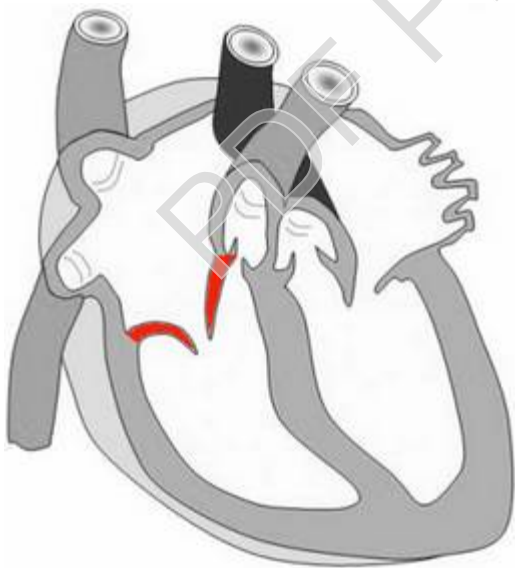
oreillette droite



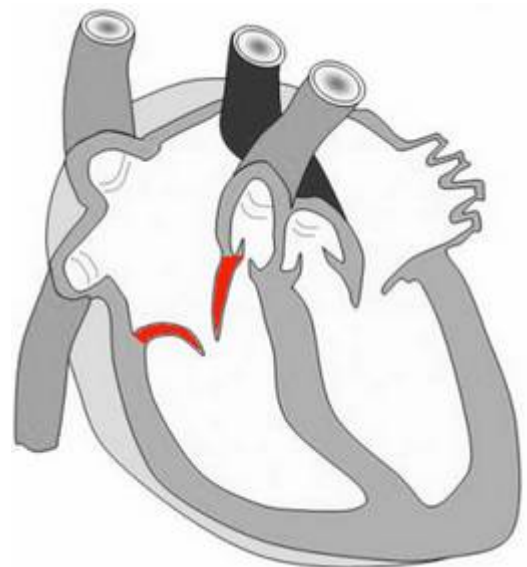
oreillette gauche



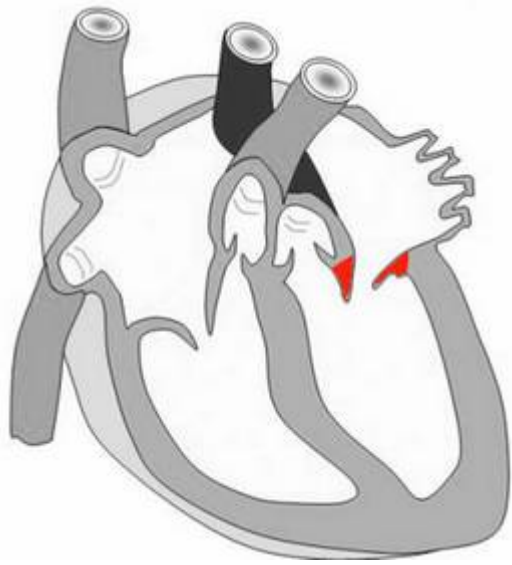
oreillette gauche



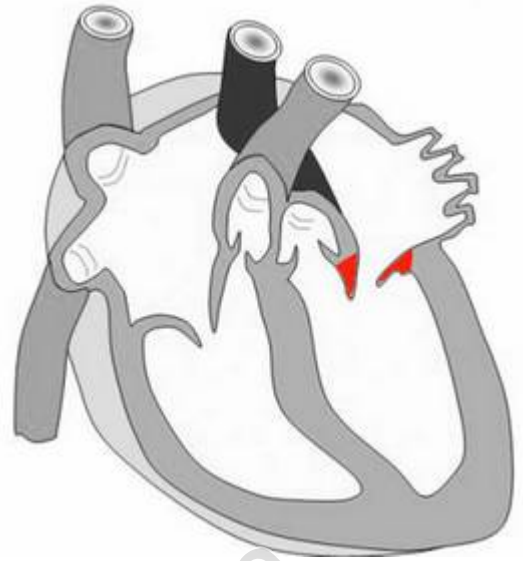
valvule tricuspide



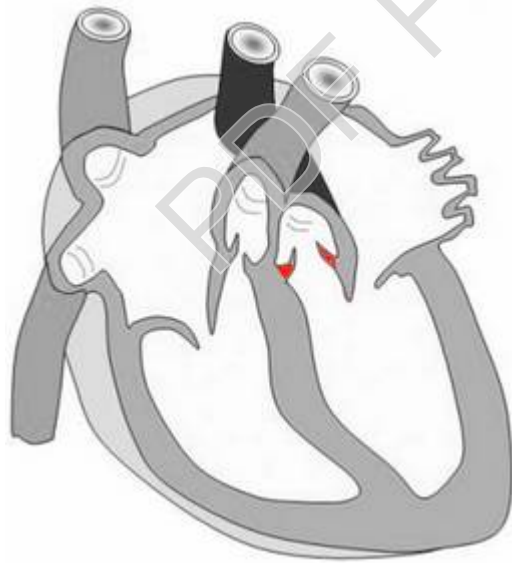
valvule tricuspide



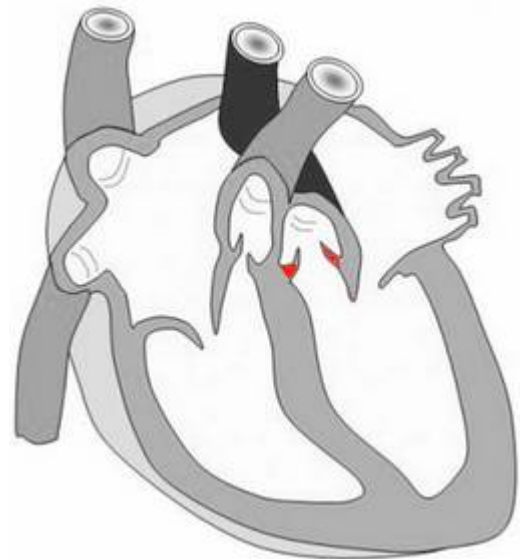
valvule mitrale



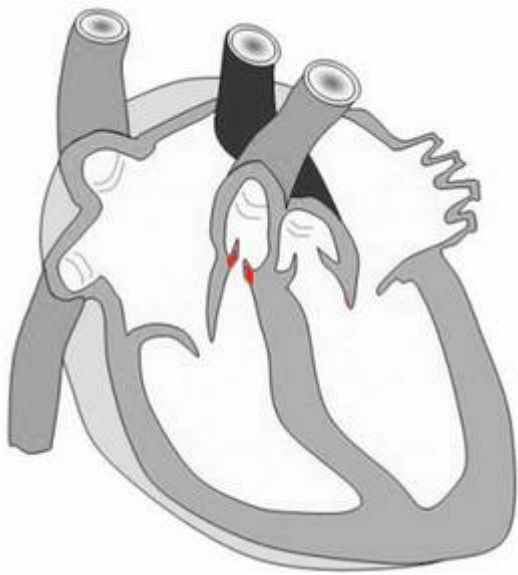
valvule mitrale



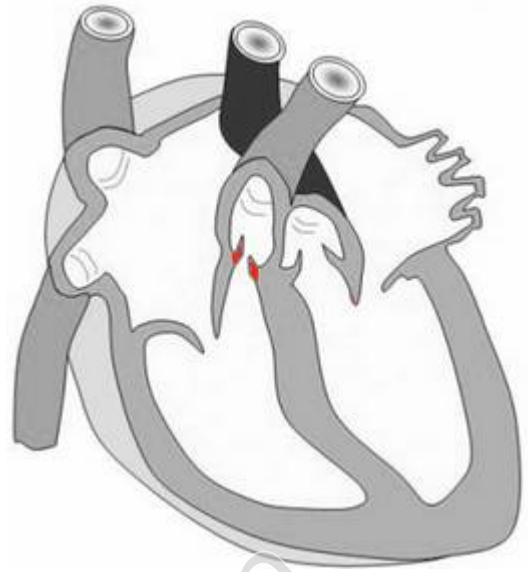
valvule aortique



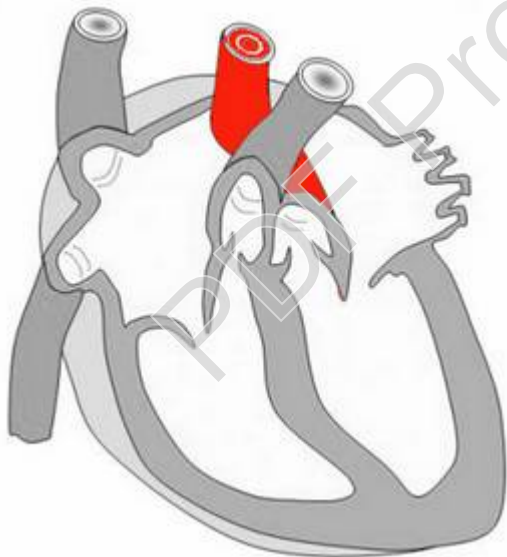
valvule aortique



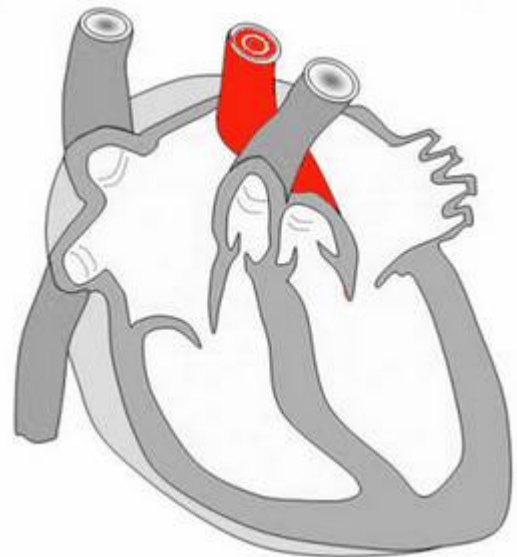
valvule sigmoïde



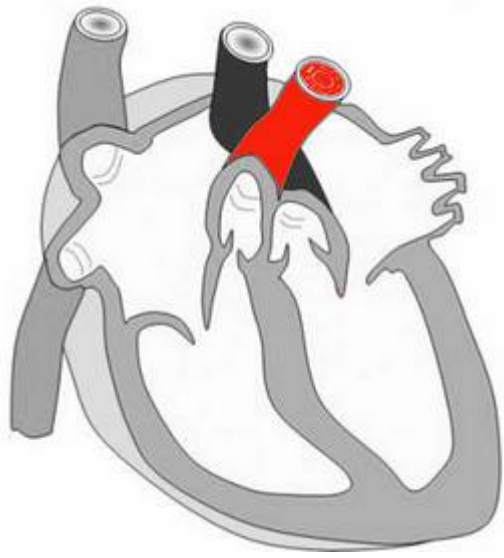
valvule sigmoïde



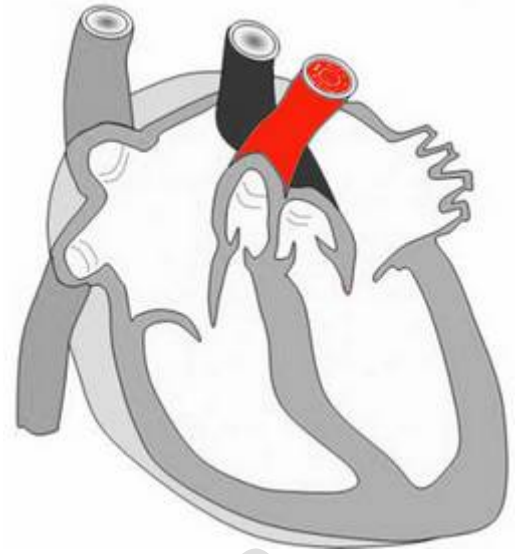
aorte



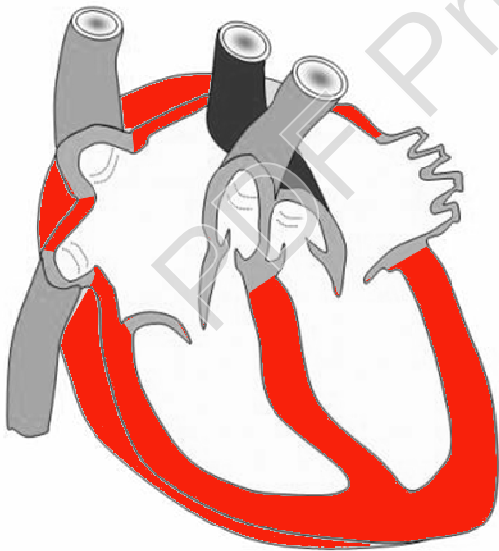
aorte



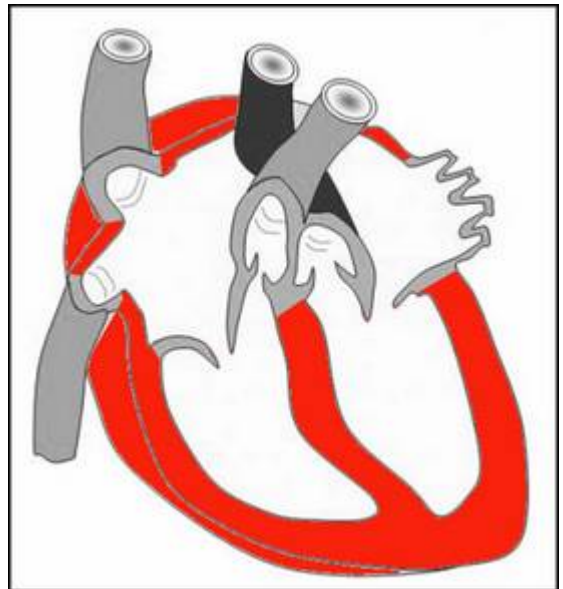
artère pulmonaire



artère pulmonaire



muscle cardiaque



muscle cardiaque